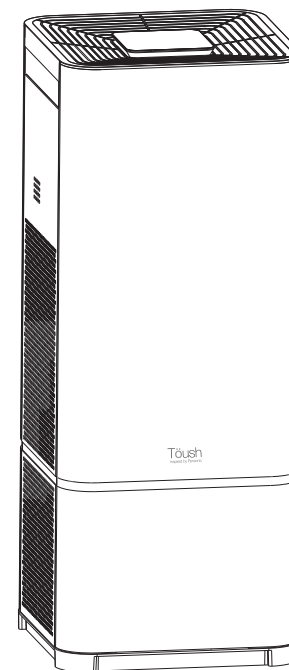


Töush
Inspired by Pensonic

SMART AIR PURIFIER
T1005SAP

Instruction Manual

Before operating this appliance, please read these instructions completely.

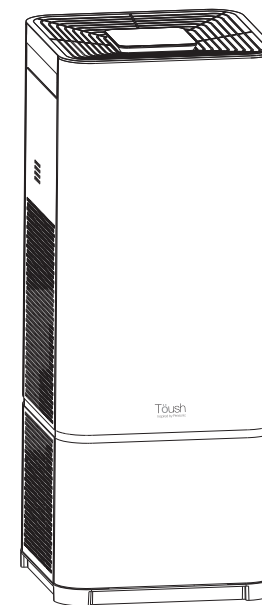


Contents

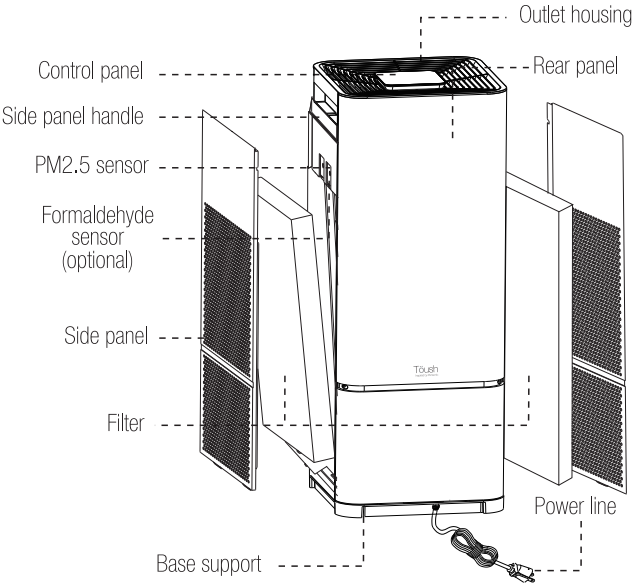
Page

Parts introduction	02
Technical specifications	02
Before the first use	03
How to use this Smart Air Purifier	04
Cleaning and maintenance	08
Troubleshooting	10
Important guidelines	12

Thank you for choosing TÖUSH products.
We hope you have an enjoyable experience using our products.



PARTS INTRODUCTION



TECHNICAL SPECIFICATIONS

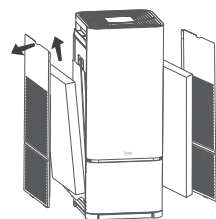
Model	T1005SAP
Air flow	450m³/h
CADR (smoke)	350-400m³/h
Room size	24-42m²
Dimension	(280 x 280 x 710)mm

With AC Adaptor

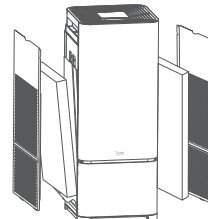
Input	100-240V (50/60Hz)
Output	24V / 2.5A

BEFORE THE FIRST USE

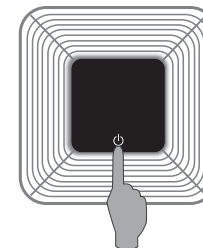
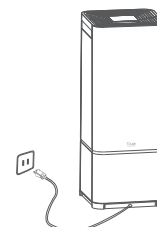
- Please read these instructions carefully before using this product and keep them for future reference.
- Place product on a level, stable and firm surface.
- Ensure the product's voltage rate matches the voltage stated on the rating label.
- Open box and gently remove product from packaging.



Open the left and right side panels and remove filters. Remove filter packaging.



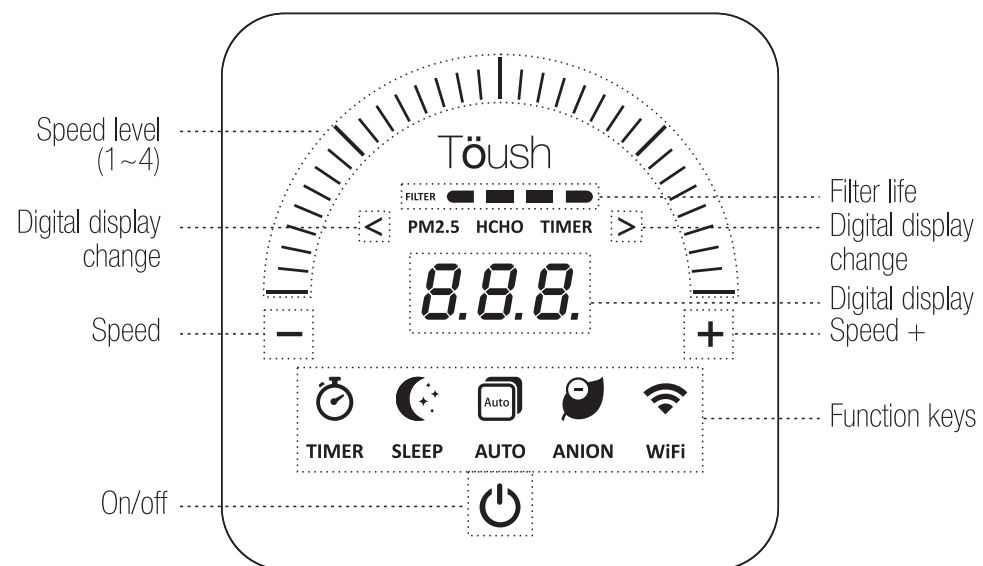
Install filters and side panels.



Connect to power supply. Touch the On/Off button to start product.

HOW TO USE THIS SMART AIR PURIFIER

Control Panel



Power On/Off

- Plug product into power source to turn it on. It is now on standby mode.
- The power indicator light flashes. Once the power on button is pressed, the negative ions are turned on by default, and 'PM2.5' is displayed.
- After 30 seconds, the panel will display the present air quality and proceeds to purify the air.

Increase/decrease Air Speed

- Press '+' to increase and '-' to decrease speed.

Timer

- Press the timer function key and the icon will light up. The 'time' will be displayed. Press the timer key again and set the timer between 1 and 8 hours.
- After 10 seconds, timer will start the countdown, and 'PM2.5' is displayed. When the countdown is over, the product will automatically shut down and go into standby mode.
- Timer cancellation: long press timer key for 10 seconds.



Sleep mode

- When sleep function button is pressed, icon will light up, and the rest is turned off.
- Press any key to exit sleep mode, and the product reverts to last set function.
- It is recommended to turn on sleep mode at night.



Auto mode

- When the auto mode key is pressed, the icon lights up, and the air speed is automatically controlled according to the current air quality.



Anion mode

- Negative ion function can be switched off manually anytime.



Filter life reminder function

- The filter screen life is displayed when it is turned on for the first time.
- Replace filter when the 'filter' light flashes.
- After replacing filter, long press the reset key for 10 seconds, the filter life indicator is restored to full grid. Long press the negative ion key for 10 seconds.

AIR QUALITY DISPLAY



Here is the air quality indicator

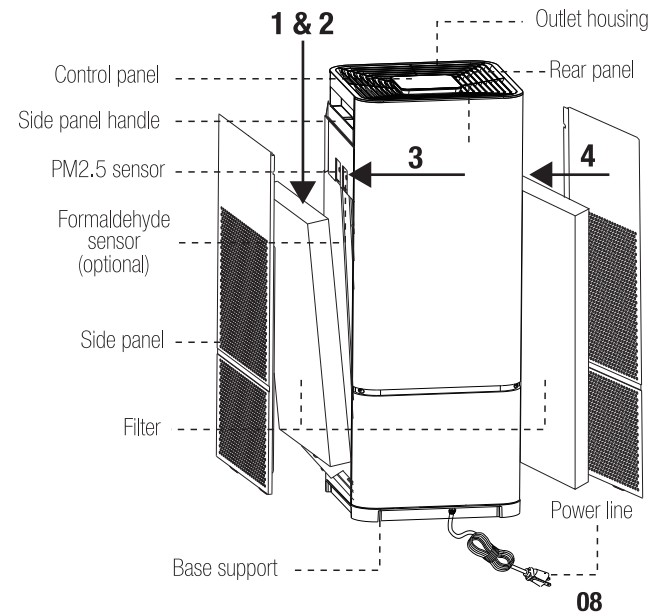
- Blue means good air quality
- Purple means moderate air quality
- Red means bad air quality

Air quality indicator light	Blue		Purple	Red
Air Speed	1	2	3	4

- You can press the switch button to display different types of air quality detection data such as PM2.5 value, formaldehyde concentration value or set timing at any time.
- Touch right or left arrow lightly to display the different types of air quality values.
Note: the formaldehyde sensor has 5 minutes data lag.

CLEANING AND MAINTENANCE

- Switch off the product and disconnect from power source.



1) High Efficiency HEPA filter

- This filter cannot be washed or vacuumed.
- Replace filter every 6-12 months.

2) Activated carbon filter

- Replace carbon filter every 6-12 months.

3) Air quality sensors

- It is recommended to clean air quality sensors every month to ensure the reading is accurate.
- You may blow inside the sensor or purchase an air blower to clean it. Remove white cap before cleaning sensors.

4) Cleaning the exterior

- Wipe body, panels and power cord with a soft, dry cloth. Using rough or abrasive material for cleaning can damage the surface.
- If detergent and water is used, do not let power cord get wet as this may damage the product or cause electric shock. Use only mild detergent. Do not use scouring powder, abrasive cleaning agents, alkaline, thinner, bleaching agent, alcohol or gasoline to clean product's exterior.

Note: DO NOT operate product without filters inside as this may damage the sensors. If you will not be using the product for some time, please store it in a dry place at room temperature and cover it with a plastic bag.

Purifiers that are used for long term

If product is kept running 12 – 24 hours a day, and is operated in a standard home or domestic environment:

- For High Efficiency HEPA filter and activated carbon filter, replace filter when indicator light flashes. Both filters last between 6 and 9 months depending on the product's usage.
- If the environment the product is placed in is polluted, the filter replacement time will be shortened.

After replacing filters:

- Hold filter button down for 10 seconds until the indicator light disappears. The product can now be reset.
- Please put the used filter in a plastic bag before disposing as used filters can be quite dirty.

TROUBLESHOOTING

Issues	Solutions
Product not operating.	<ul style="list-style-type: none">• Check whether filter has been replaced. Replace filter when the filter indicator light starts flashing.• After filter is replaced, long press the reset key for 10 seconds and the filter life indicator is restored to full grid. Long press the negative ion key for 3 seconds.
There is no air flowing out of the outlet.	<ul style="list-style-type: none">• Check whether product is fixed properly.• Check whether product is plugged in to power source properly.• Check whether rear panel if product is open. If opened, fix it back properly and reset the product.
No improvement in air quality although product has been operating for a long time.	<ul style="list-style-type: none">• The environment's humidity may be too high causing a false positive result.• The product is run in an environment that is bigger than the product's filtering capacity or where the ceilings are too high. Try placing product in a smaller room.
Loud noises heard while product is operating.	Check whether filter's plastic packaging has been removed.

Issues	Solutions
Sensor light always red	<ul style="list-style-type: none"> • This product is highly sensitive and may be detecting something that you cannot see or smell. Take the product to a different environment and compare the results. • Check whether sensors are dirty. If dirty, blow on them or use a blower.
Less air flowing out.	Check whether the filters are dirty. If dirty, please replace them.
Odours emitted from product.	Check whether the filters are dirty. If dirty, please replace them.
Filter changed but product is not operating.	<ul style="list-style-type: none"> • Press reset key for 3 – 5 seconds. The indicator light will turn off and the product will start operating normally. • Check whether the rear panels were fixed properly.
Air filtration is high, even on auto mode.	Odour sensors detect odours in the air, including odours such as perfume, alcohol or cigarettes. Check whether these odours are present.



IMPORTANT GUIDELINES

- Read all instructions properly before using.
- This product is intended for household use only.
- Place product on a level, stable and firm surface.
- Before using the product make sure all parts are installed correctly.
- To protect against fire, electric shock and injury, do not immerse cord, plug or product in water or other liquid. Do not fix or remove power plug with wet hands.
- Use only the supplied original accessories that came with the product.
- Always keep product clean. Ensure the air inlets and outlets are free of obstructions.
- DO NOT operate product without filters as this may damage the product's sensors.
- The product should always be switched off before connecting or disconnecting from the main socket. Do not pull on the cord to disconnect the plug from the main socket, hold the plug instead.
- Do not let cord hang over the edge of table or touch any hot surfaces.
- Do not place near hot surfaces, hot gas or oven.
- Let the product cool down completely before disassembling or putting it away.
- Do not touch product while it is operating.
- Do not leave the operating product unattended.
- Do not use the product outdoors.



IMPORTANT GUIDELINES

- Do not use any attachments or parts that were not supplied with this product.
- Ensure the product's voltage rate matches the voltage stated on the rating label. If this is not the stated, contact your dealer and stop using the product.
- Always unplug the product after use.
- Do not put any foreign materials into the product.
- Do not submerge the product into water or other liquid or wash it rinse it under running water.
- This product should be used as described within the instructions for use that accompanies it.
- This product is not intended for use by persons (including children) with reduced physical, sensory or mental capabilities, lacking of experience or knowledge, unless they are supervised or instructed concerning the use of the product by a person responsible for their safety.
- Children should be supervised to ensure that they do not play with the product.
- Keep the product and its cord out of children's reach.
- Do not insert needles, wire and any other metal or foreign objects into the gaps or interior to prevent damage due to short circuit.
- Do not operate any product with a damaged cord or plug, or after the product malfunctions or has been damaged in any manner. Any repairs and servicing should always be carried out by PENSONIC Customer Care/ Service Centre.



This marking indicates that this product should not be disposed with other household wastes throughout the nation. To prevent possible harm to the environment or human health from uncontrolled waste disposal, recycle it responsibly to promote the sustainable reuse of material resources. To return your used product, please use the return and collection systems or contact the retailer where the product was purchased. They can take this product for environmental safe recycling.

Thank you again for choosing TÖUSH products. Should you require further information/assistance, please visit www.pensonic.com or write to us at customerservice@pensonic.com or call our toll-free Care Line at 1-800-881-770.

Töush

Inspired by Pensonic

Distributed By:
PENSONIC SALES & SERVICE SDN.BHD.
1165, Lorong Perindustrian Bukit Minyak 16,
Taman Perindustrian Bukit Minyak,
14100 Simpang Ampat, Penang, Malaysia.
Careline : 1800-881-770