

Töush

Inspired by Pensonic

SMART ROBOTIC VACUUM T9001SRV

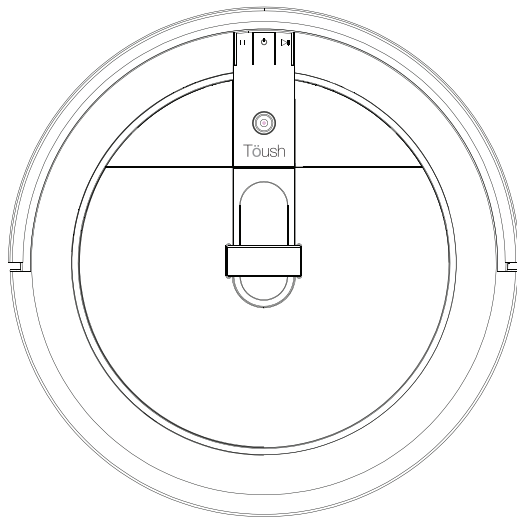
Connecting Smart Devices with
Robotic Vacuum User Guide



Scan to
download
App

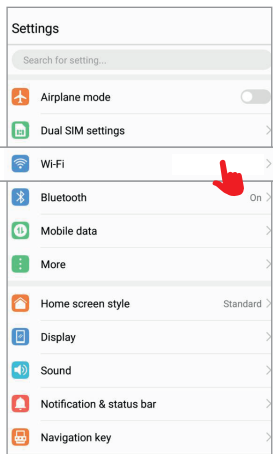
www.pensonic.com


1-800-881-770
call this number for any enquiries

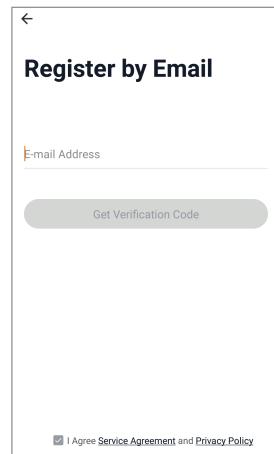
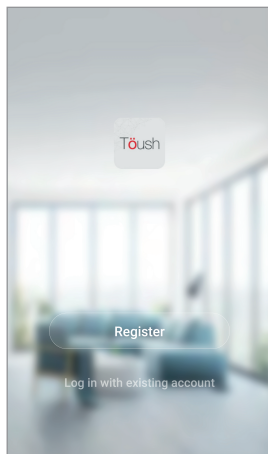


- Note:
1. Ensure WiFi network is on before connecting device.
 2. The WiFi uses 2.4GHz waveband and works best with a strong and stable WiFi signal.
 3. If WiFi connection fails, restart WiFi router and repeat steps 1 & 2.

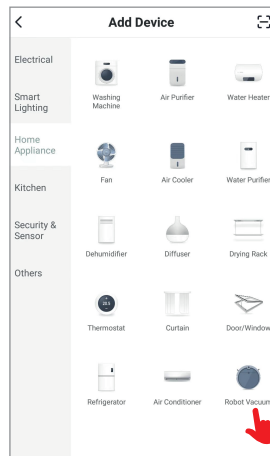
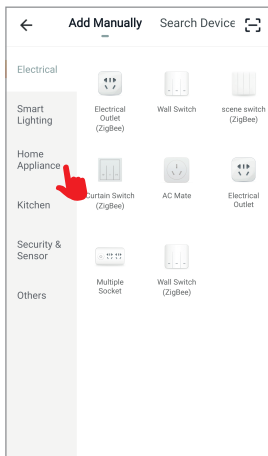
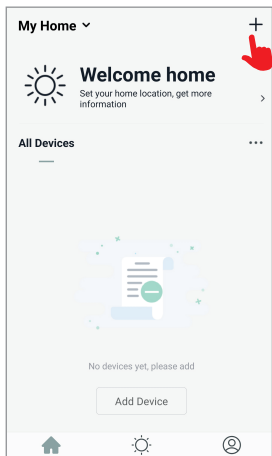
Step 1 Turn on WiFi and connect to Internet.



Step 2 If you do not have an account yet, kindly register by entering the required information.

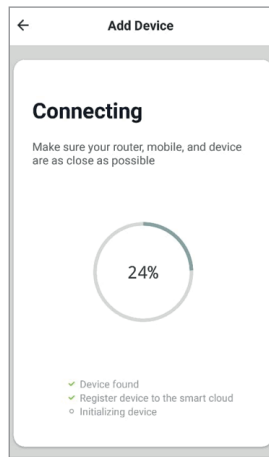
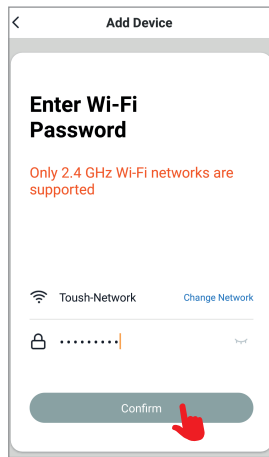
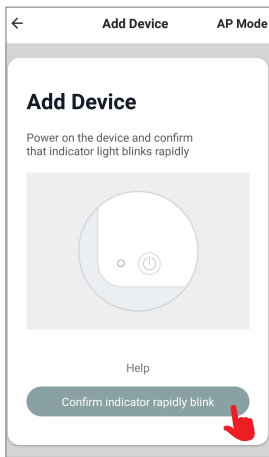


Step 3 Open Töush App, click on the '+' symbol to add product.
Add Device > Home Appliance > Robot Vacuum

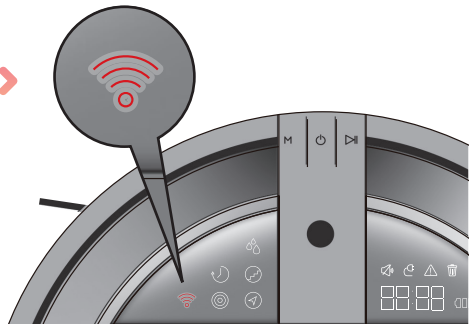
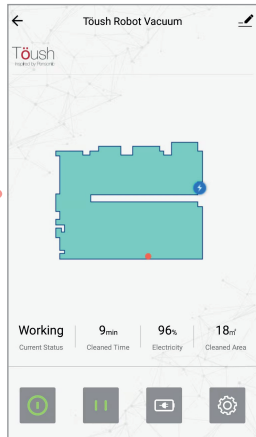
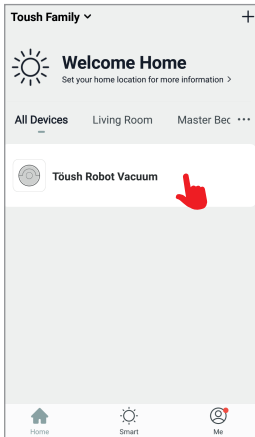
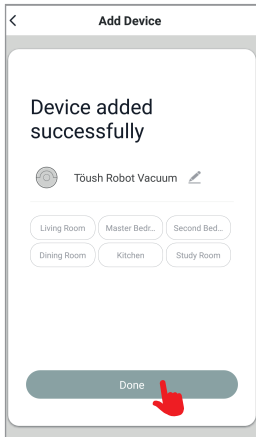


Step 4 Observe whether the product's WiFi indicator light on the product's display panel is blinking rapidly or slowly. If indicator light is blinking rapidly, press 'Confirm indicator rapidly blink' on the App to start pairing. If indicator light is blinking slowly, please set-up in AP mode (refer to section under 'To Set-up in AP Mode')

Step 5 Now enter WiFi password.
WiFi password > Confirm

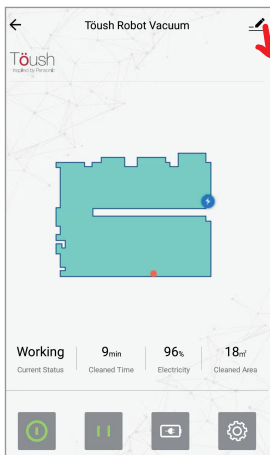


Step 6 You can now view the connected product.
The product's WiFi indicator light will be constantly on.

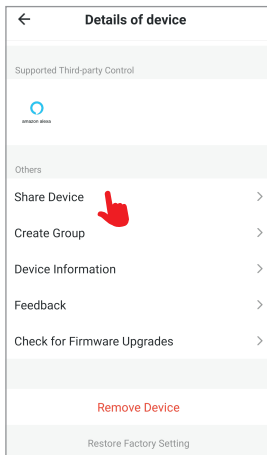


 Note: Töush App must be installed on other device before product can be shared.

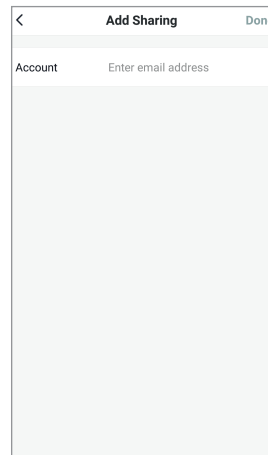
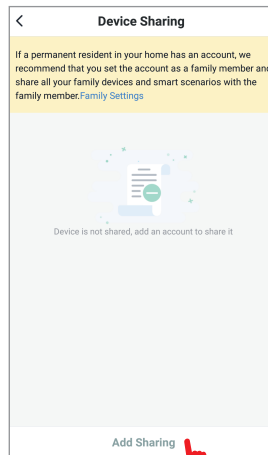
Step 1 Click '' icon at the top right corner of Töush App home screen.



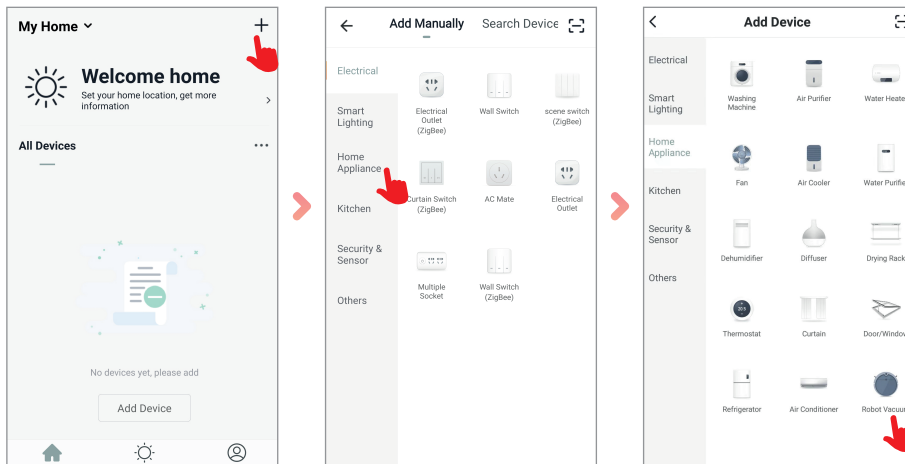
Step 2 Click 'Share device'. Click on 'Add Sharing' option.



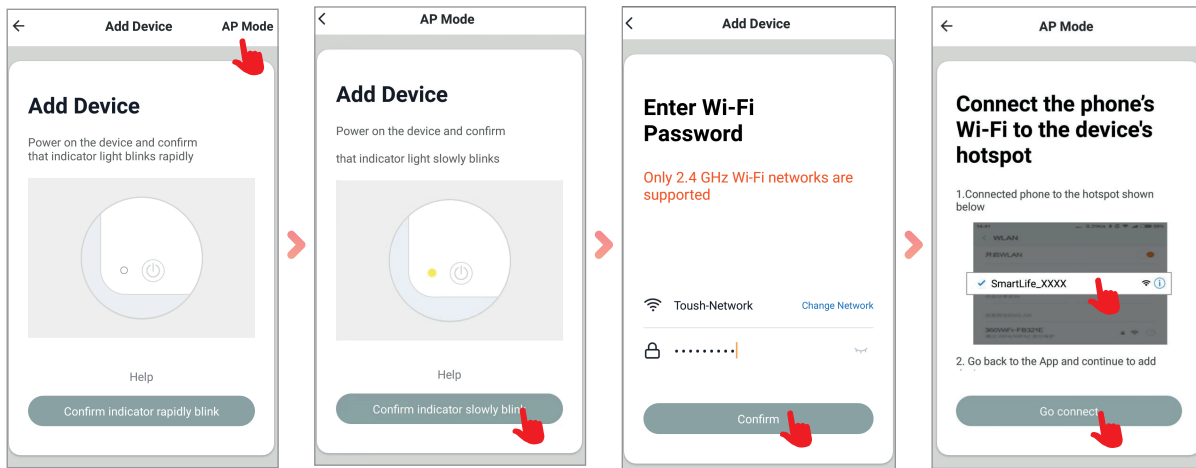
Step 3 Enter another email address.



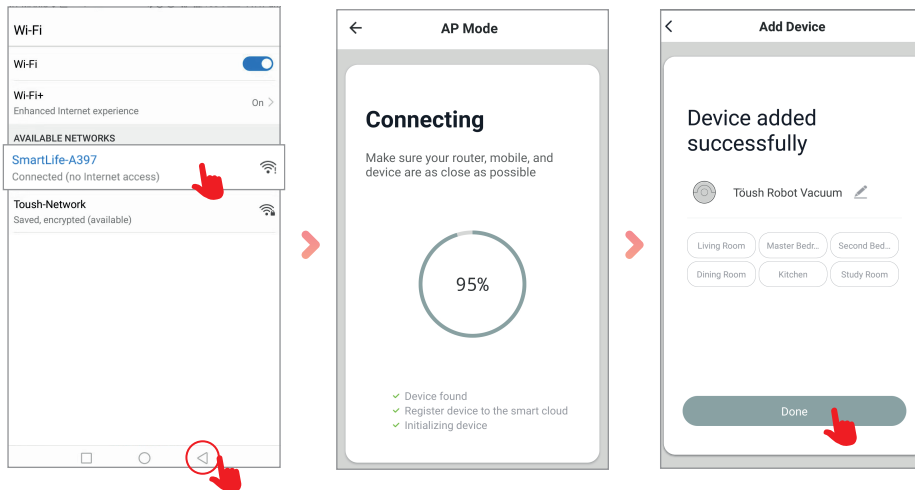
Observe whether the robotic vacuum WiFi indicator light on the product's display panel is blinking rapidly or slowly.
If indicator light is blinking slowly, set-up network in AP mode.



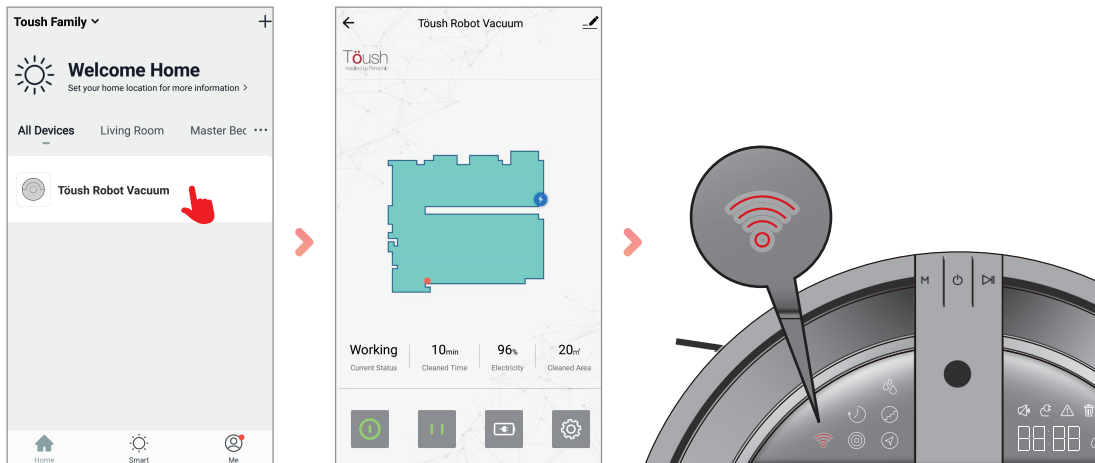
On App's 'Add Device' page, press on 'AP Mode', followed by 'Confirm indicator slowly blink'. Enter WiFi password and choose 'SmartLife' hotspot.



Wait for WiFi to complete connection with product.



The WiFi indicator light on product's panel will be constantly on.



Töush

Inspired by Pensonic

VAKUM ROBOTIK PINTAR T9001SRV

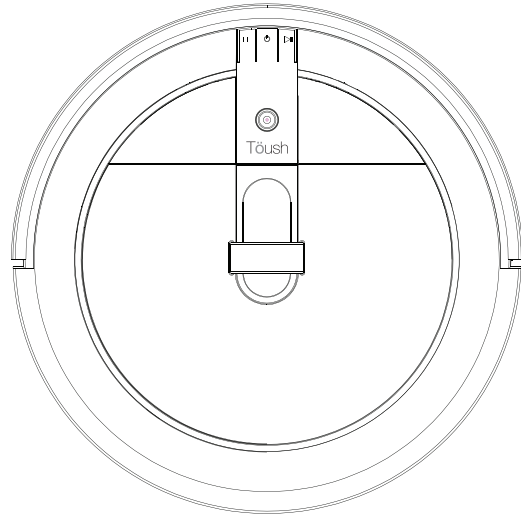
Panduan Pengguna Bagaimana Menghubungkan
Peranti Pintar dengan Vakum Robotik



Imbas Untuk
Muat Turun
App

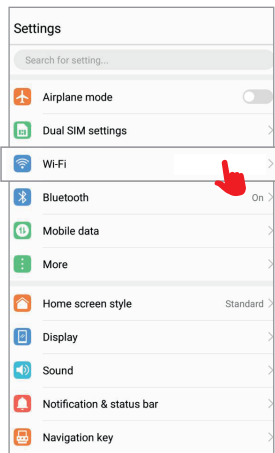
www.pensonic.com


1-800-881-770
call this number for any enquiries

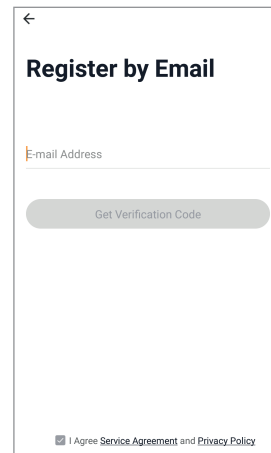
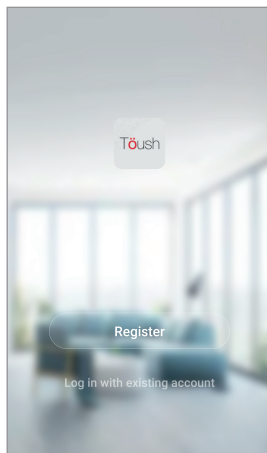


- Nota: 1. Pastikan rangkaian Wifi sudah diaktifkan sebelum menghubungkan peranti.
2. Wifi ini menggunakan jalur gelombang 2.4GHz dan berfungsi dengan sempurna jika isyarat WiFi kuat dan stabil.
3. Sekiranya sambungan WiFi gagal, cuba mulakan semula penghalang WiFi dan ulangi langkah-langkah 1 & 2.

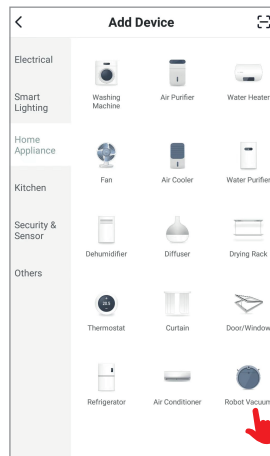
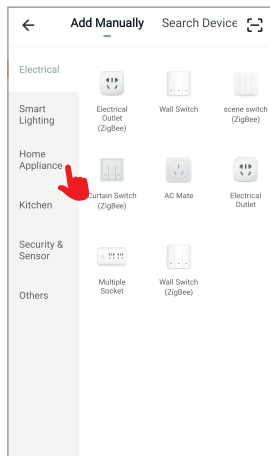
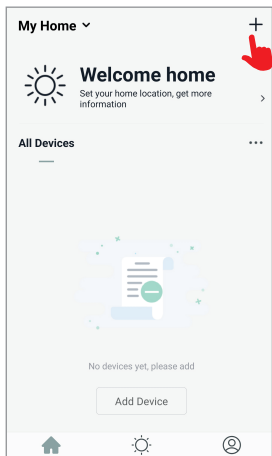
Langkah 1 Sambungkan Wifi dengan internet.



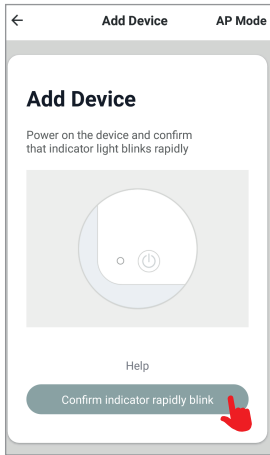
Langkah 2 Jika anda belum mempunyai akaun, sila daftar akaun anda dengan mengisi maklumat yang diperlukan.



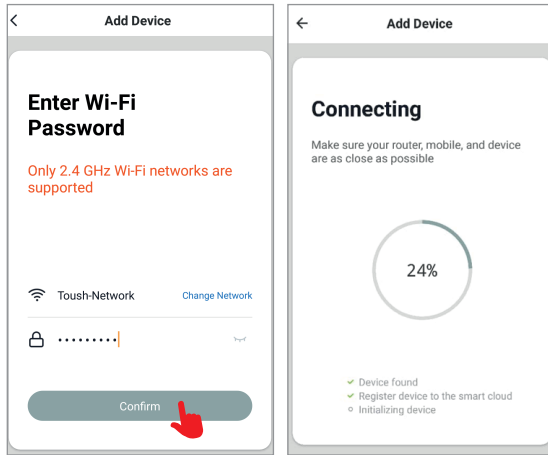
Langkah 3 Buka 'Töush App', klik pada simbol '+' untuk menambah produk.
Add Device > Home Appliance > Robot Vacuum



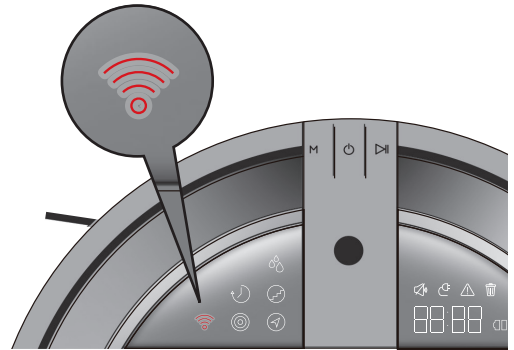
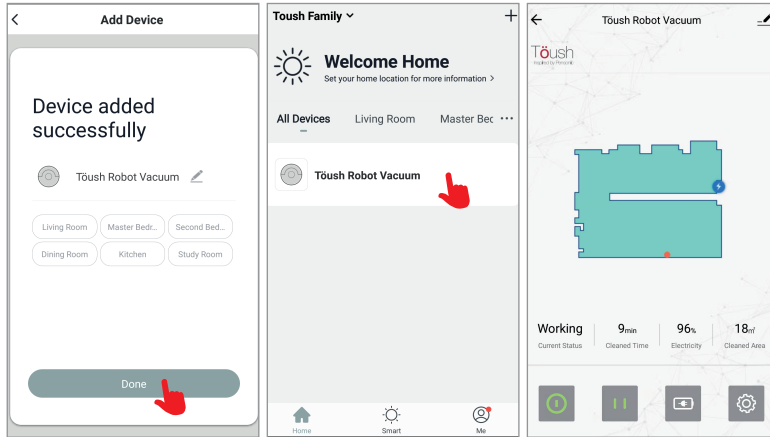
Langkah 4 Perhatikan sama ada lampu indikasi produk di panel paparan produk sedang berkelip secara cepat atau perlahan-lahan. Jika ia berkelip dengan cepat, tekan butang 'Confirm indicator rapidly blink' untuk menyambungkan 'App' dengan produk. Jika lampu indikasi berkelip secara perlahan, sambungkan produk dengan menggunakan mod AP (sila rujuk bahagian 'Penyambungan Rangkaian dengan Mod AP').



Langkah 5 Sekarang masukkan kata laluan WiFi. WiFi password > Confirm

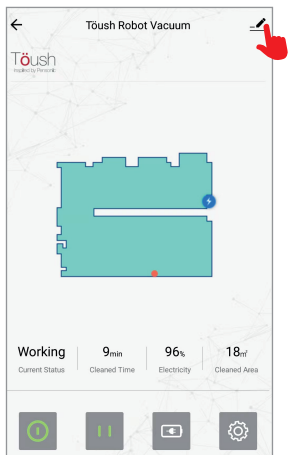


Langkah 6 Sekarang anda dapat melihat bahawa produk telah disambungkan. Lampu indikator WiFi di produk akan sentiasa menyala.

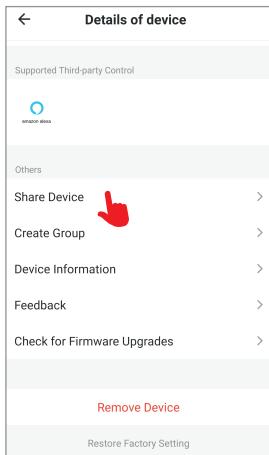


💡 Nota: 'Töush App' mesti di muat turun di peranti pintar yang lain sebelum perkongsian produk dapat dilakukan.

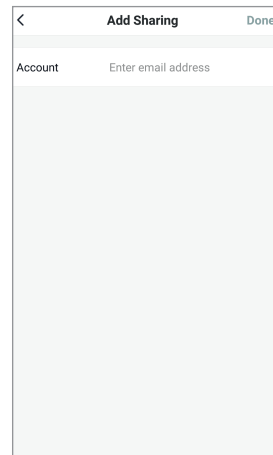
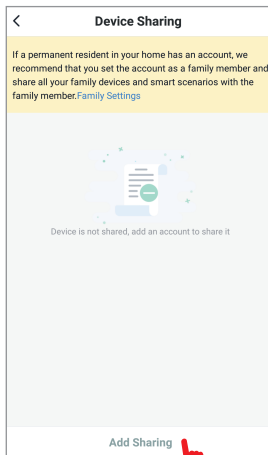
Langkah 1 Klik ikon '📎' yang terdapat di sebelah kanan atas laman 'Töush App'.



Langkah 2 Klik 'Share device' (Kongsi peranti).
Klik pilihan 'Add Sharing' (Tambah).

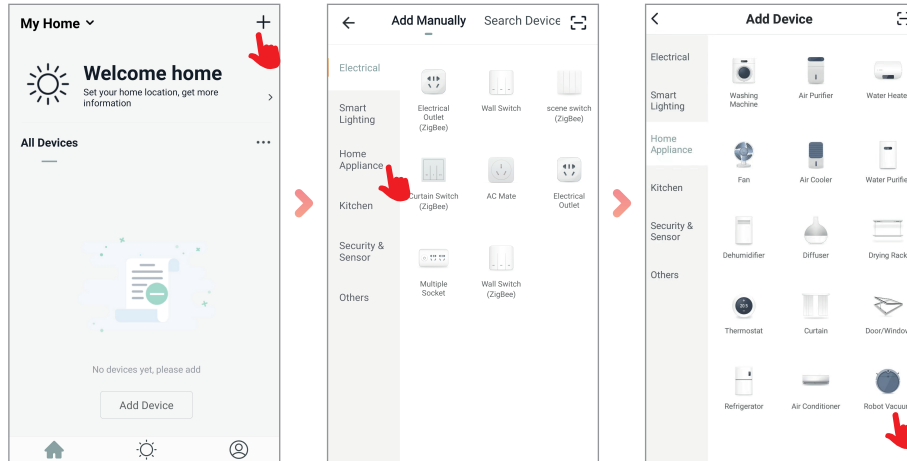


Langkah 3 Masukkan emel yang lain.

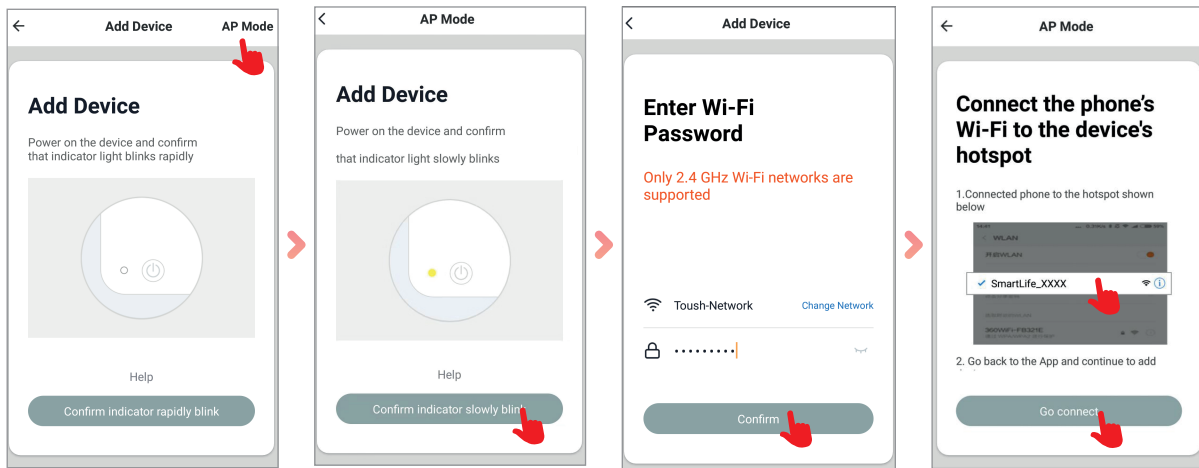


* Kandungan di dalam manual ini tertakluk kepada perubahan tanpa sebarang notis.

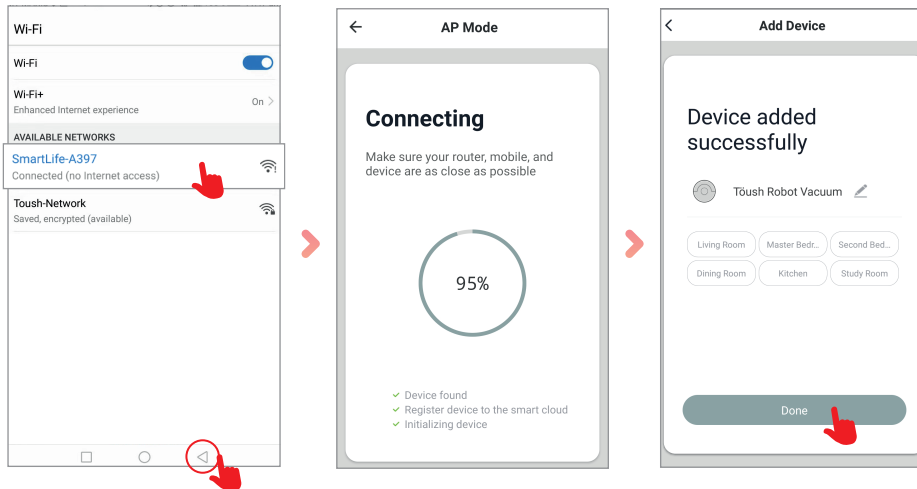
Perhatikan sama ada lampu indikasi vakum robotik di panel paparan produk sedang berkelip secara cepat atau perlahan-lahan.
Jika lampu berkelip secara perlahan, sambungkan dengan rangkaian menggunakan mod AP.



Di 'App', pergi ke muka 'Add Device', tekan 'AP Mode', diikuti oleh 'Confirm indicator slowly blink'. Masukkan kata laluan WiFi dan pilih hotspot 'SmartLife'.



Tunggu sehingga WiFi melengkapkan sambungan dengan produk.



Lampu indikasi WiFi di panel produk akan sentiasa menyala.

